

One Marylebone

Building Operations Manual – ACCESS & PARKING

Directions & Access - Front address: 1 Marylebone Rd, London, NW1 4AQ

1. West access entrance. This will be locked with a chain so access will need to be pre-arranged and on the delivery schedule.
2. East access entrance (as above).
3. Front door access to building, 8 stairs.

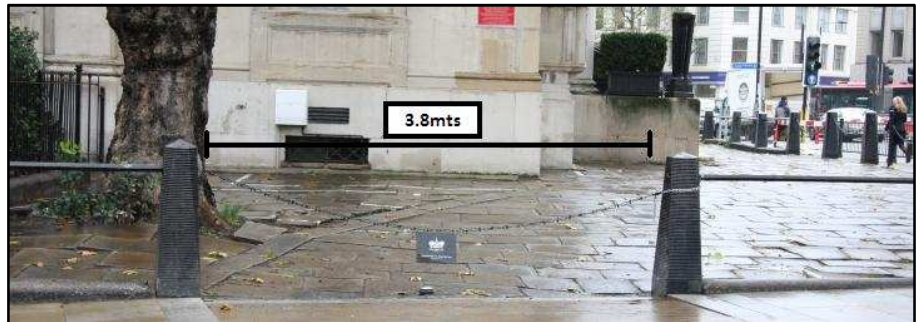
Please note; there is a one way system around the premises shown in white arrows

(See images below for measurements of access gates and step heights)

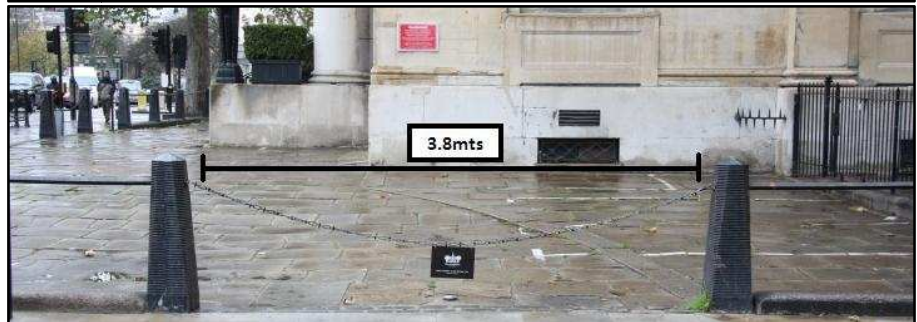


1. West front access

There are no height restrictions for these access gates



2. East front access



3. Main entrance front door



One Marylebone Rd, London, NW1 4AQ

t: 020 7380 1663 f: 020 7380 1662 e: events@onemarylebone.com

One Marylebone

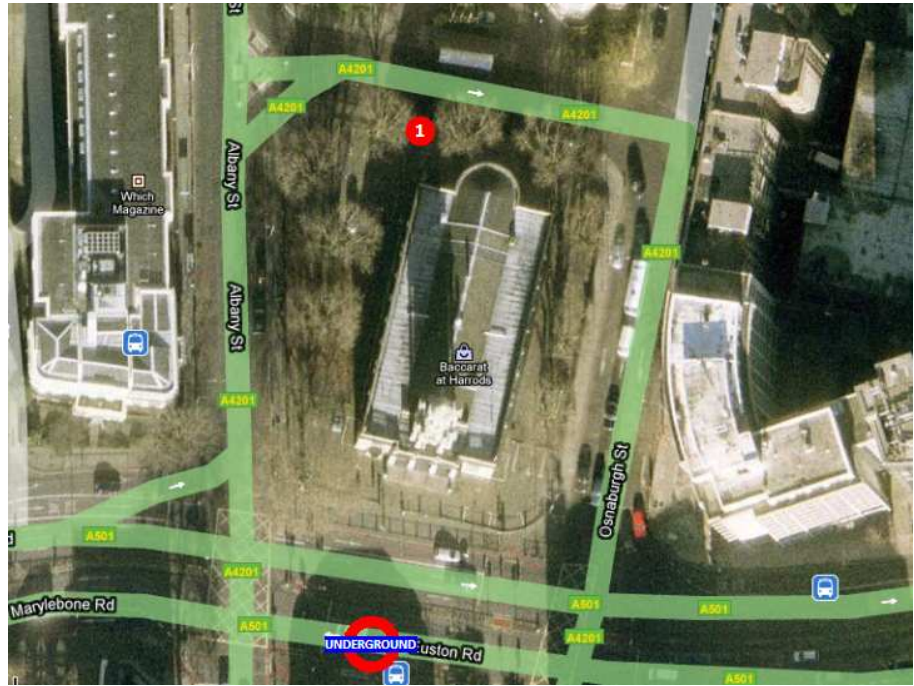
Building Operations Manual – ACCESS & PARKING

Directions & Access - Rear address: 1 Marylebone, Osnaburgh Terrace, London, NW1 4GD

1. Rear access gate. This is locked at all times and access will need to be pre-arranged and listed on the delivery schedule.

Please note; there is a one way system around the premises shown in white arrows

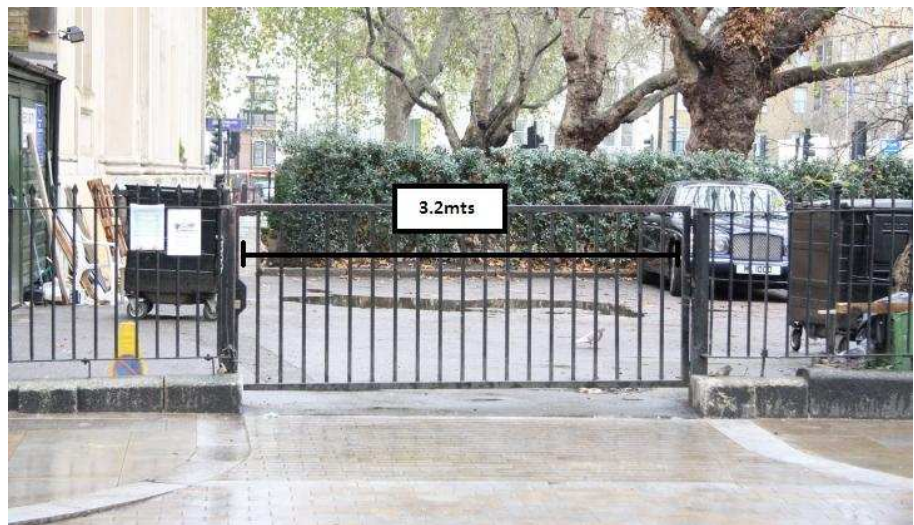
(See image below for measurements of access gate)



1.

Rear access

There are no height restrictions for this access gate



Directly opposite the venue is Great Portland Street tube station (shown above on map).

This is also a useful POI to enter into a GPS for directions.



One Marylebone Rd, London, NW1 4AQ

t: 020 7380 1663 f: 020 7380 1662 e: events@onemarylebone.com

One Marylebone

Building Operations Manual – ACCESS & PARKING

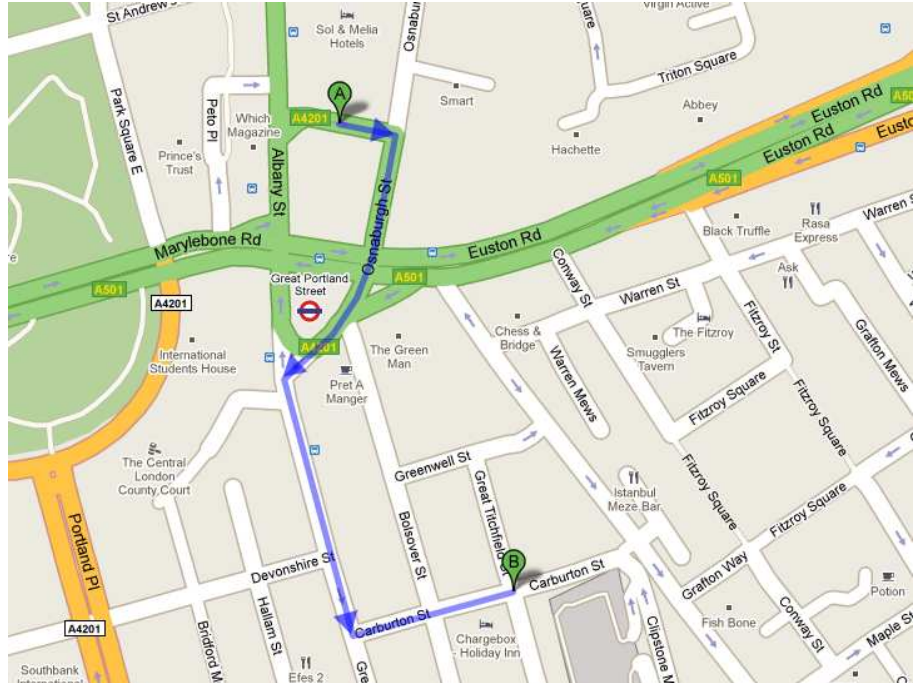
Parking - One Marylebone cannot under any circumstances allow parking on site. Directions to two NCP parking facilities are below;

Holiday Inn NCP

Carburton Street
London
W1w 5Ee
0845 050 7080

Number of spaces : 65
Disabled bays : 2
Maximum height : 1.83m
Passenger lifts : 0
CCTV : Y
Accepts credit cards : Y
Congestion charge machine : No

Daily tariff: £5.20ph



Portland Place NCP

6-7 Weymouth
Mews
London
W1g 7Dx
0845 050 7080

Number of spaces : 30
Disabled bays : 0
Maximum height : 6ft 6in
Passenger lifts : 0
CCTV : N
Accepts credit cards : Y
Congestion charge machine : No
Safer Parking Scheme

Daily tariff: £11 for
2hrs

