

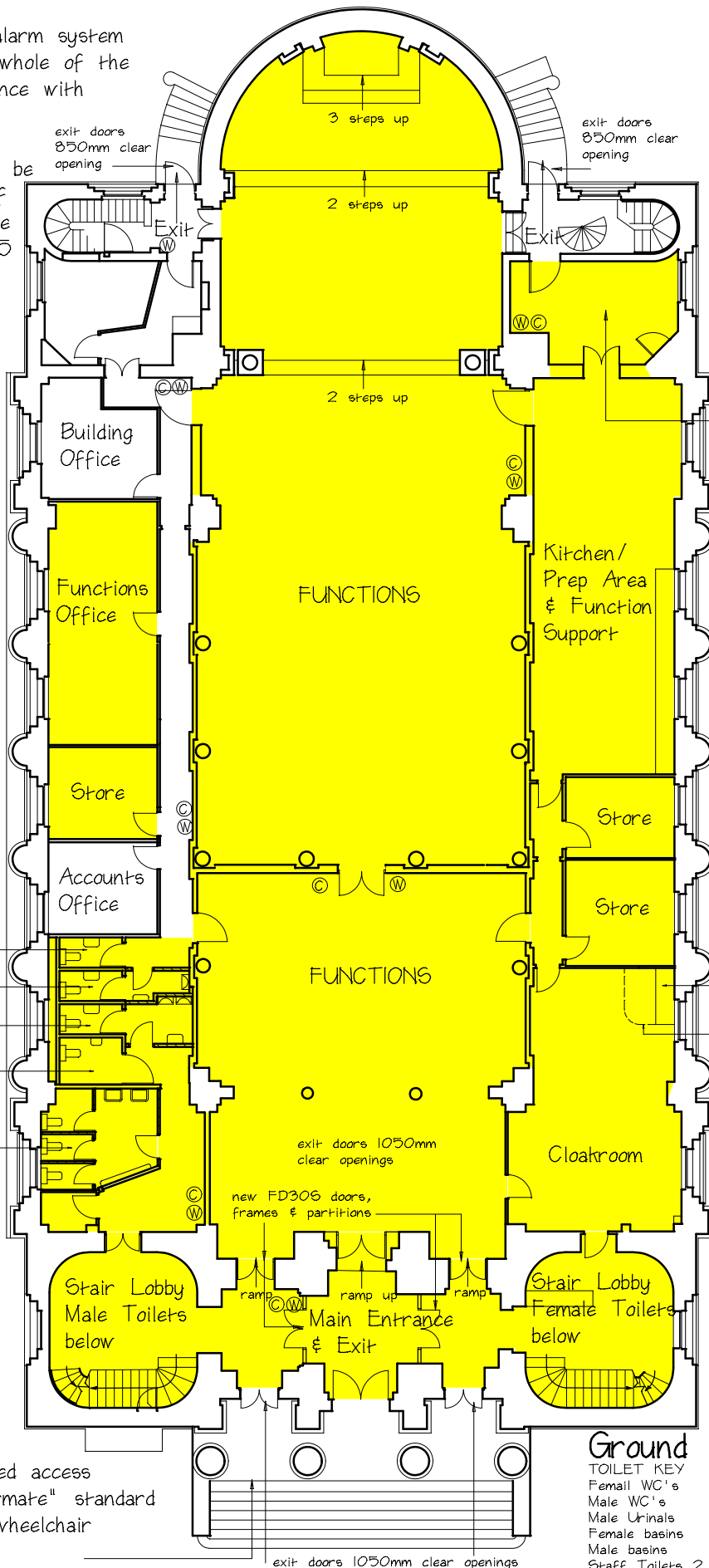
**NOTE**

A fully automatic fire alarm system is to be fitted to the whole of the function area in accordance with BS 5839-1:2002.

Emergency lighting is to be installed to the whole of the building in accordance with BS 5266-1:2005

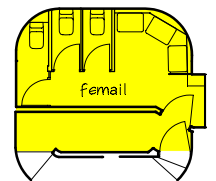
All fire escape doors are to have a minimum clear width of 850mm

Rev. A. notes on fire alarm & emergency lighting added.  
 exit doors amended  
 Rev. B. locker/changing room added.  
 Additional stair lobby added.  
 Basement toilets added  
 Dims. of fire doors added.  
 Rev C. Extra toilets to basement added.  
 Rev D. Toilets added to ground floor.

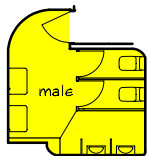


KEY  
 (W) Water Extingisher  
 (C) Carbon Dioxide Extingisher

lockers  
 curtain on rail for changing



Basement Female Toilets



Basement Male Toilets

temporary disabled access to be by "Stairmate" standard mobile powered wheelchair stairclimber

**Ground Floor Plan**

| TOILET KEY    | Basement | Ground | First | Total |
|---------------|----------|--------|-------|-------|
| Female WC's   | 3        | 3      | 5     | 11    |
| Male WC's     | 2        | 1      | 1     | 4     |
| Male Urinals  | 2        | 2      | 2     | 6     |
| Female basins | 3        | 2      | 3     | 8     |
| Male basins   | 2        | 2      | 2     | 6     |
| Staff Toilets | 2        | 2      | 2     | 6     |

2 & disabled toilet on ground floor

**PETER KNIGHT M.C.I.A.T., A.B.Eng., M.R.S.H.**  
**CHARTERED ARCHITECTURAL TECHNOLOGIST**

The White Lodge Orange Tree Hill Havering-Atte-Bower Essex RM4 1PJ  
 Tel 01708 727955 Fax 01708 727955 EMail pknight.ltd@ukonline.co.uk

**PROJECT** Holy Trinity Church  
 1 Marylebone Road, Marylebone, London

| SCALE | DATE     | JOB No. | DRG.No. | REV |
|-------|----------|---------|---------|-----|
| 1-200 | June. 07 | 106     | 155     | D   |